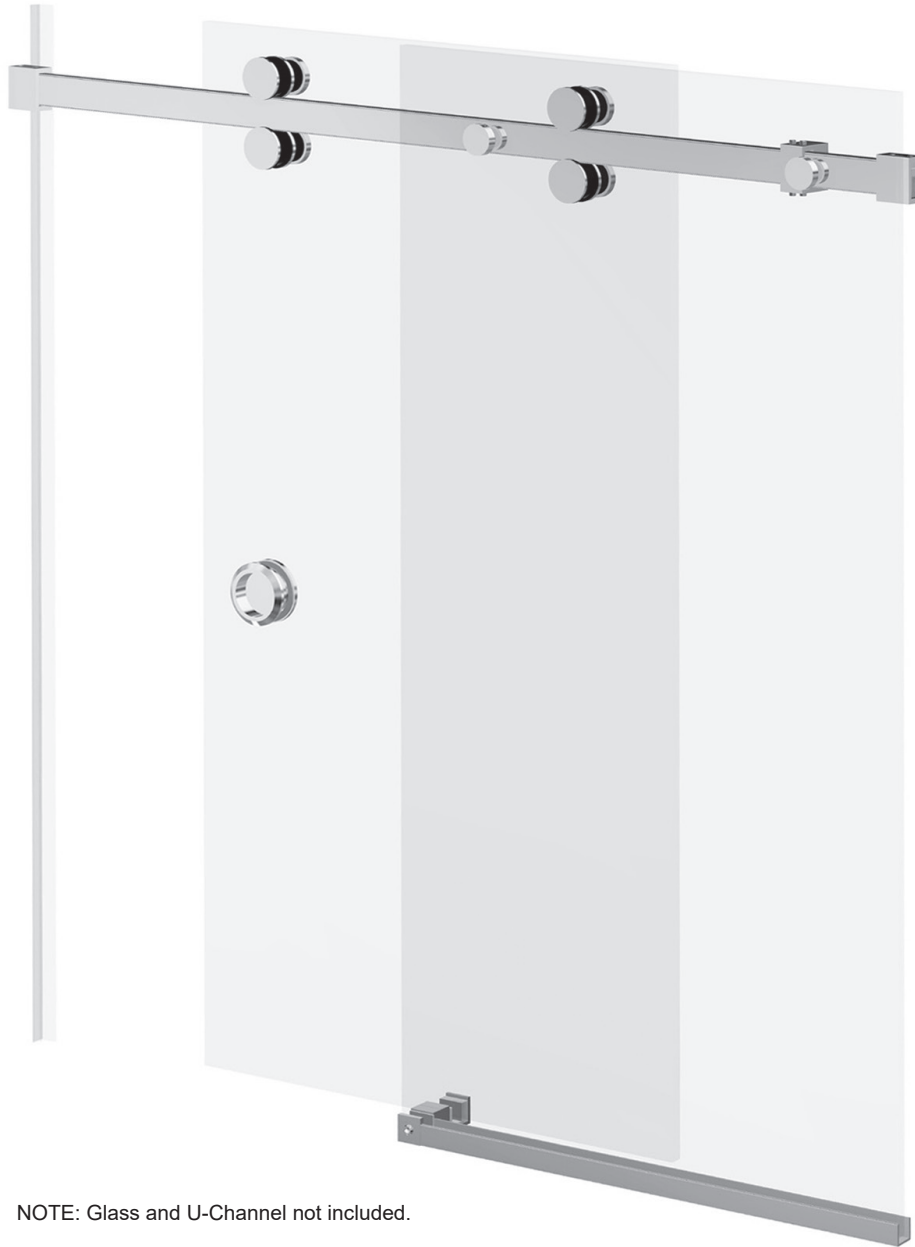


CEL CSER84 SINGLE SLIDING DOOR KIT

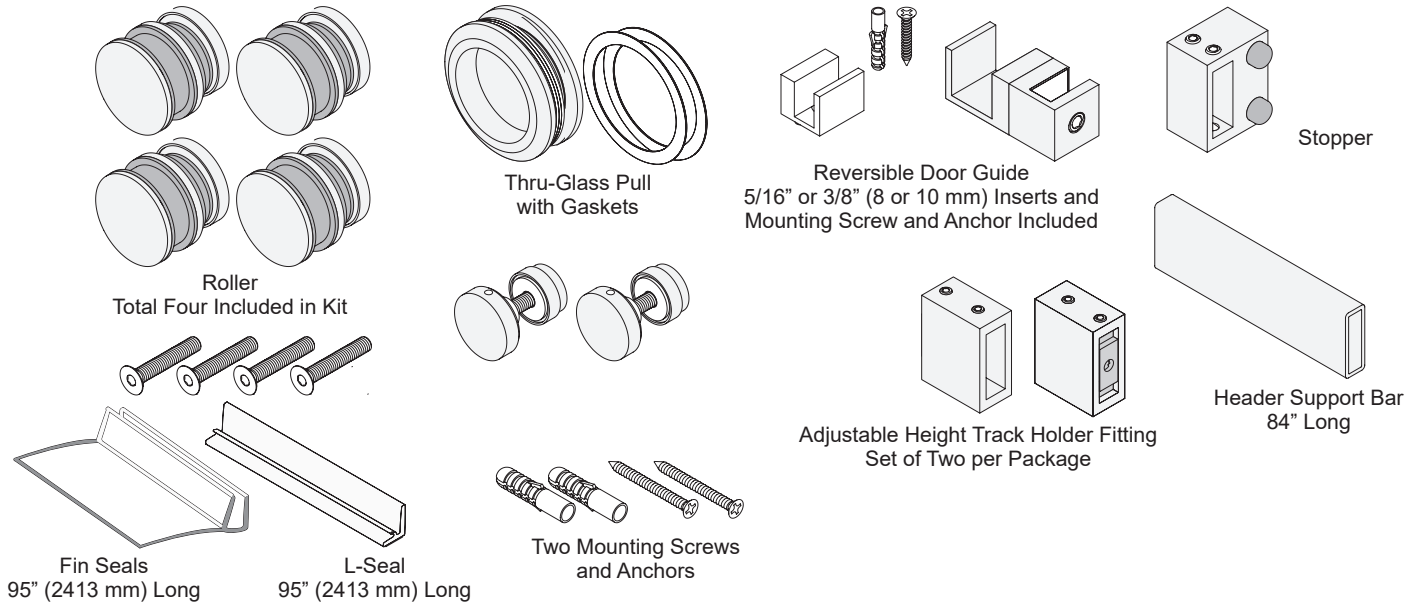
INSTALLATION INSTRUCTIONS



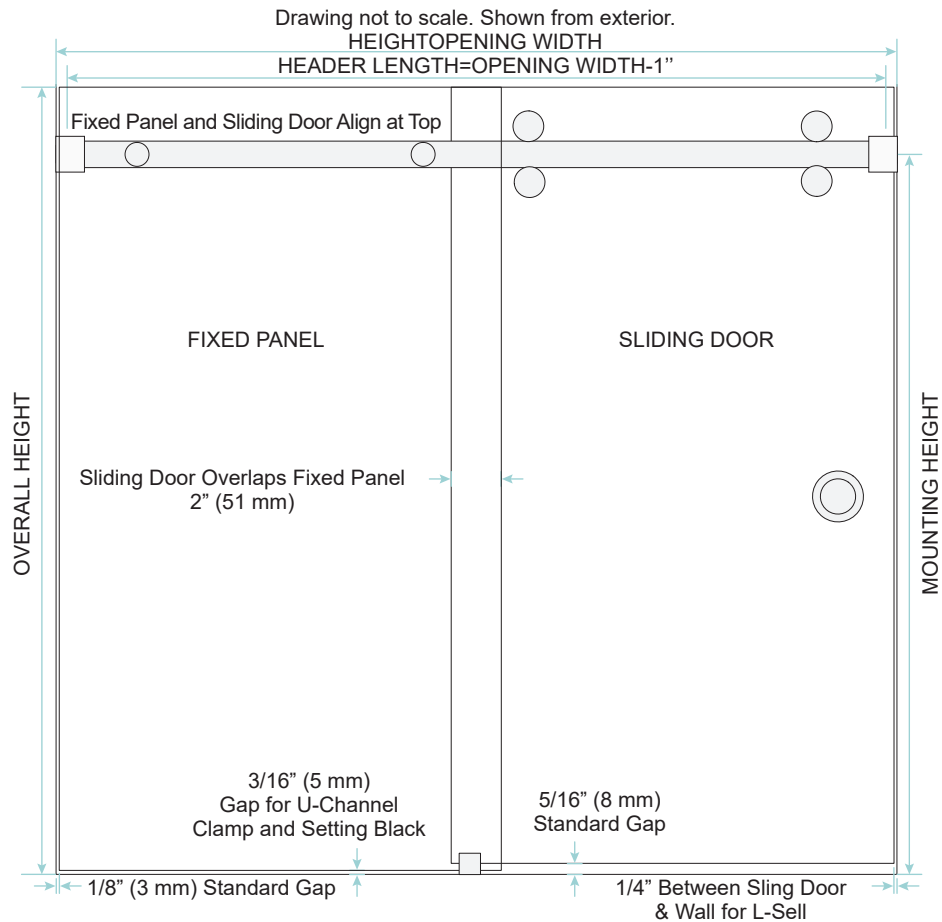
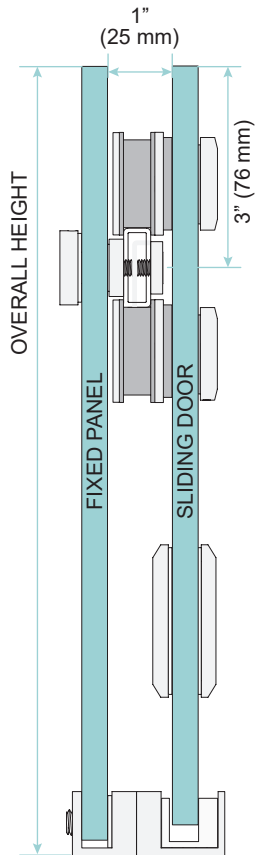
NOTE: Glass and U-Channel not included.



CEL CSER84 SINGLE SLIDING DOOR KIT



SPECIFICATIONS



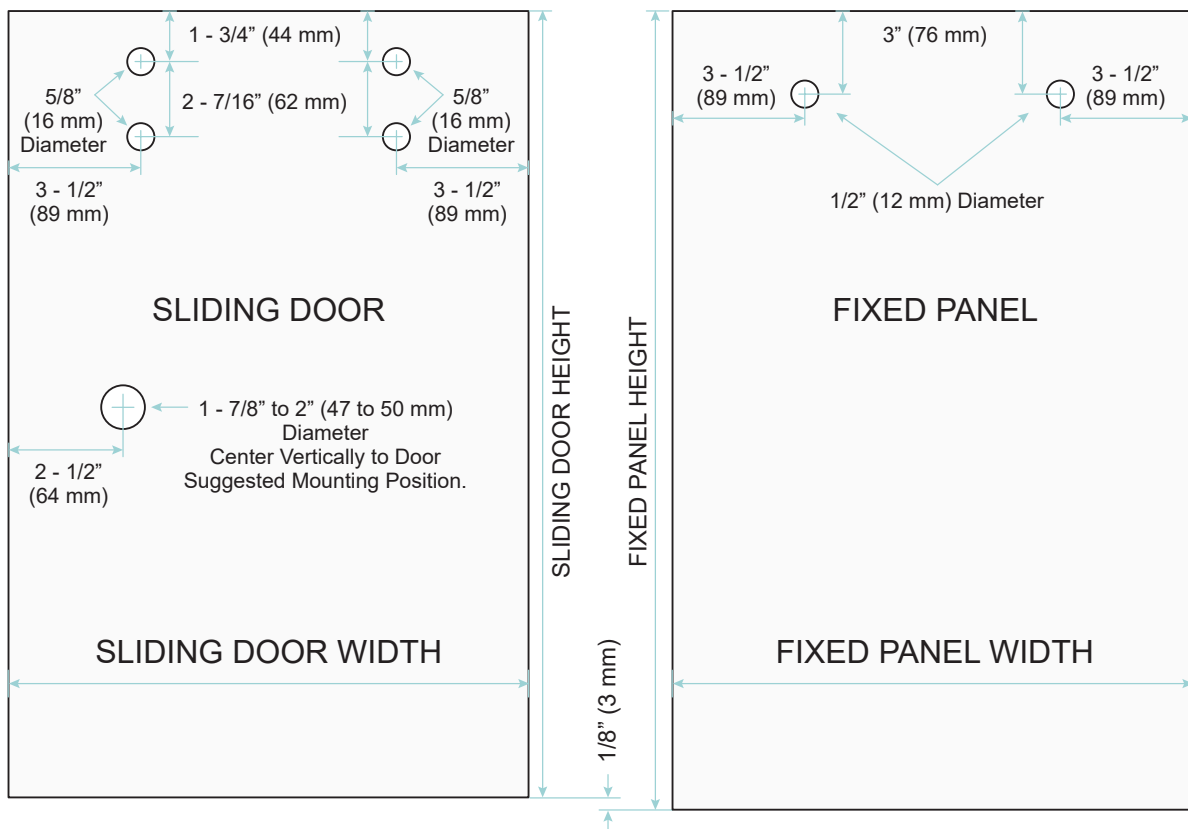
NOTE: Drawings not shown to scale. Track is cut 1" (25 mm) less than Opening Width and centered in opening. Overall Height is height from curb/floor to top of glass. Drawings shown from interior with Bottom Door Guide cupping Fixed panel.



CEL CSER84 SINGLE SLIDING DOOR KIT

GLASS FABRICATION

NOTE: For use with 5/16" to 3/8" (8 - 10 mm) Tempered Glass only. Do Not use Laminated Glass.



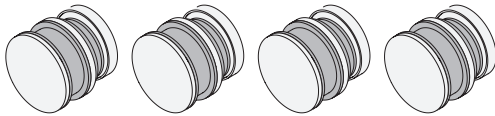
SLIDING DOOR AND FIXED PANEL WIDTH : Overall Width Divided by 2, plus 7/8" (22 mm)
 FIXED PANEL HEIGHT : Overall Height minus 3/16" (5 mm)
 SLIDING DOOR HEIGHT : Overall Height minus 5/16" (8 mm)



CEL CSER84 SINGLE SLIDING DOOR KIT

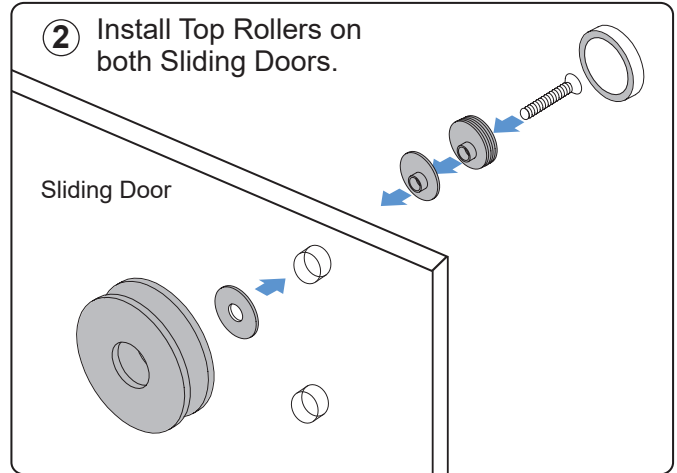
SLIDING DOOR PREPARATION

- ① Unpack and partially disassemble four sets of Rollers.



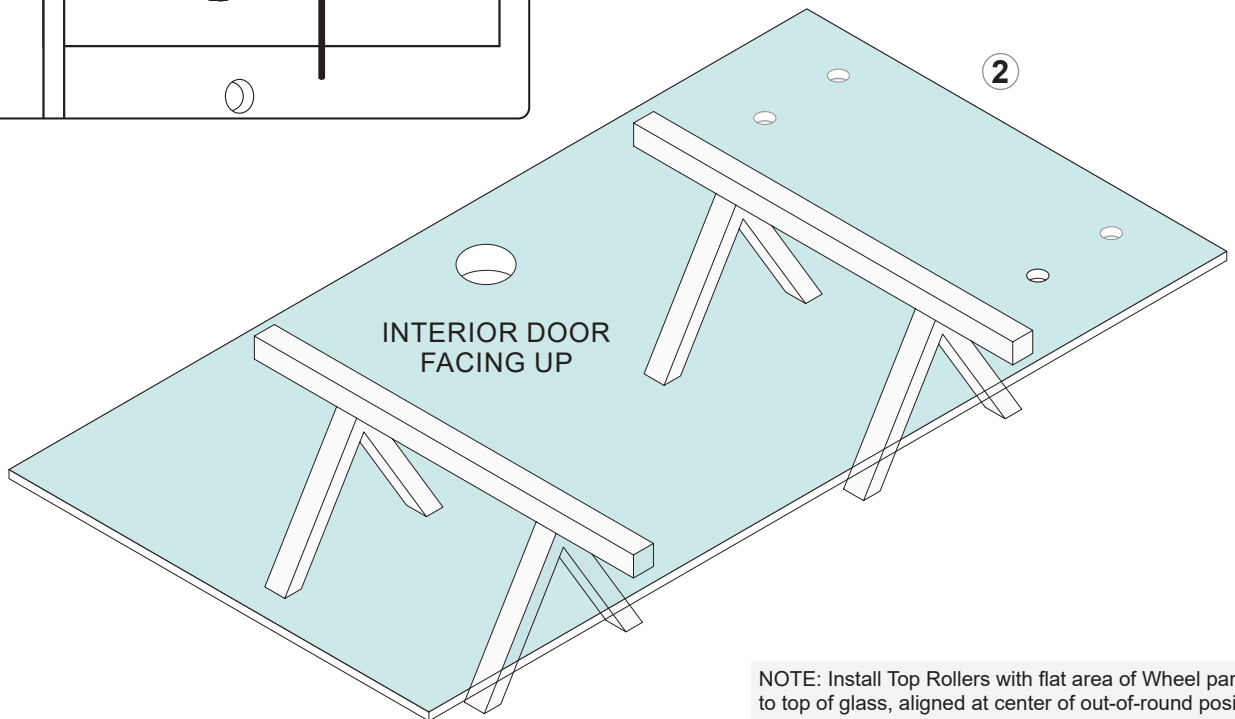
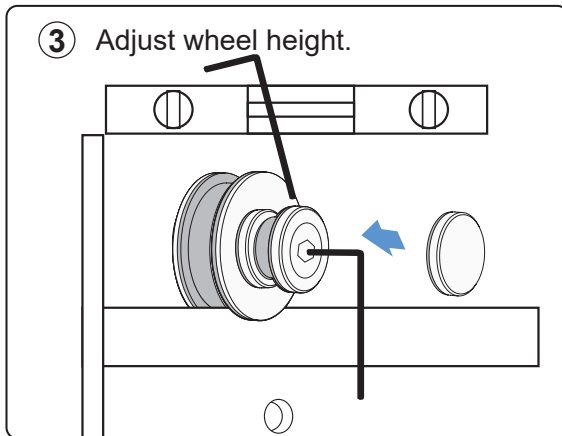
NOTE: Lower Rollers are installed after doors are hung.

- ② Install Top Rollers on both Sliding Doors.



Install Top Rollers.
Lower Rollers installed
after doors are hung.

- ③ Adjust wheel height.

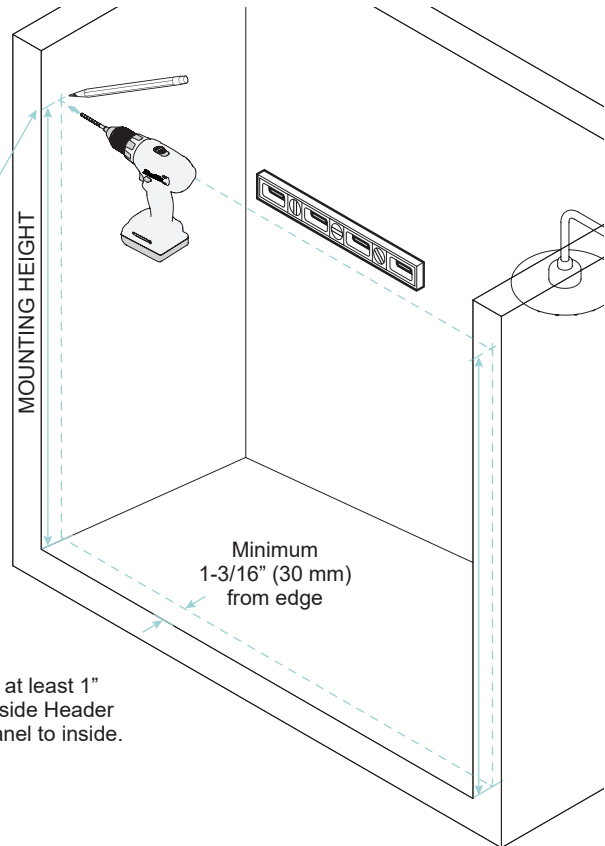
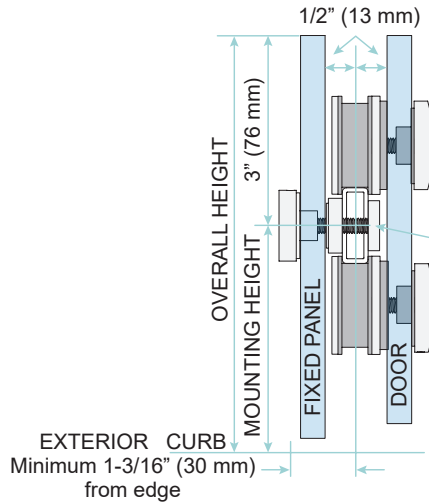


NOTE: Install Top Rollers with flat area of Wheel parallel to top of glass, aligned at center of out-of-round position.

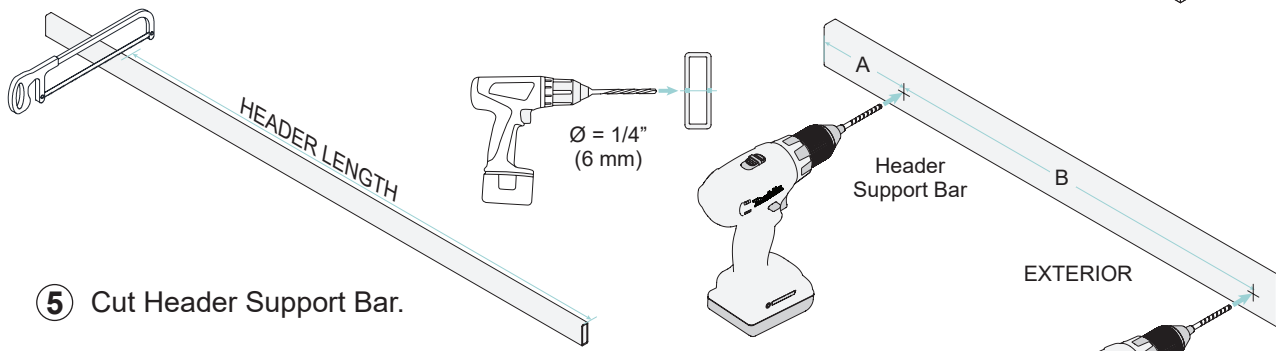


CEL CSER84 SINGLE SLIDING DOOR KIT

④ Mark and drill holes for Header Support Bar.



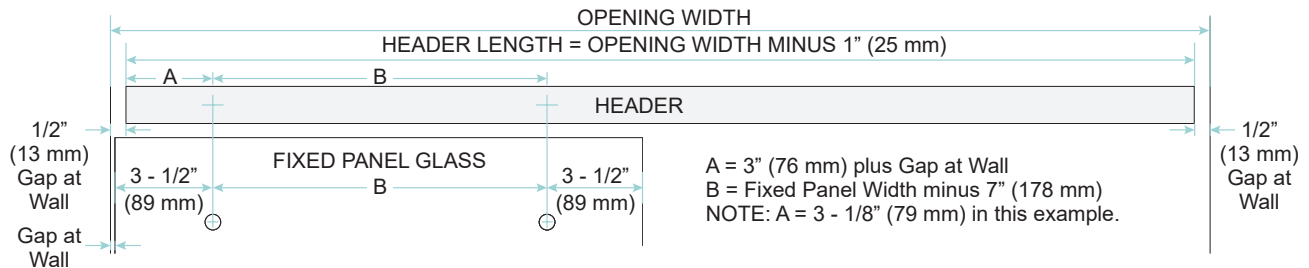
NOTE: Header Support Bar is generally centered to vertical jamb. Allow at least 1" (25 mm) from edge to install Bottom Guide. Fixed Panel mounted to outside Header Support Bar shown in this manual. Mirror instructions to mount Fixed Panel to inside.



⑤ Cut Header Support Bar.

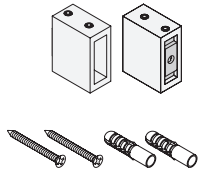
③ Drill holes for Fixed Panel Fittings.

NOTE: Header Support Bar is cut 1" (25 mm) short from tight dimension and centered in opening, leaving 1/2" (13 mm) gap on each end to mount. Refer to Fixed Panel Glass fabrication and gap allowance between Fixed Panel and wall to determine mounting hole placement.

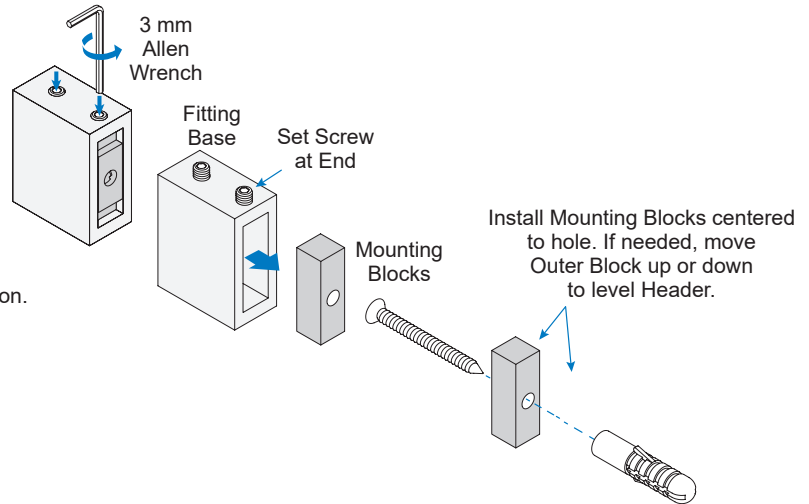


CEL CSER84 SINGLE SLIDING DOOR KIT

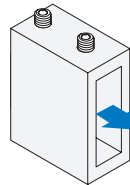
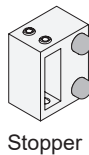
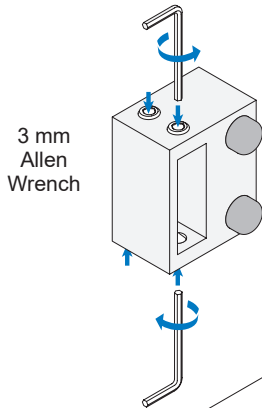
⑥ Track Holder Fittings



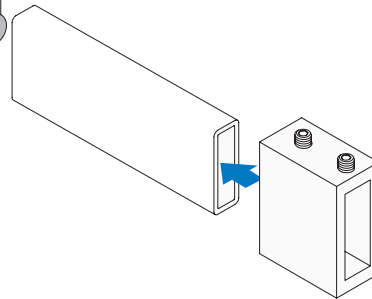
NOTE: Track Holder Fittings shown orientated for installation. Set Screw at end holds Base to Mounting Blocks while second Set Screw secures Base to Header when installed



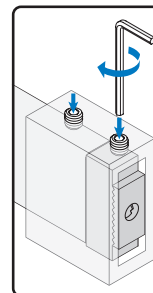
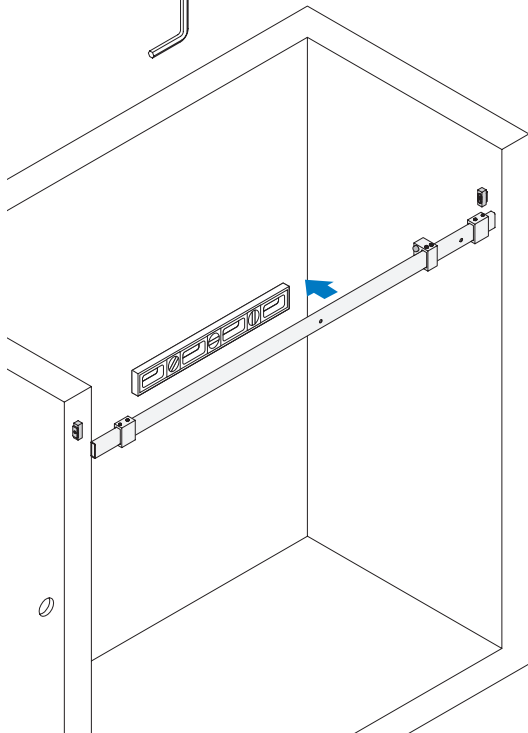
⑦ Stopper



Slide Stopper and Track Holder Fittings onto Header.



Align Header with Mounting Block. Slide Track Holder Fittings to wall and tighten Set Screws to secure.



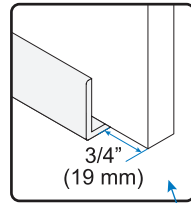
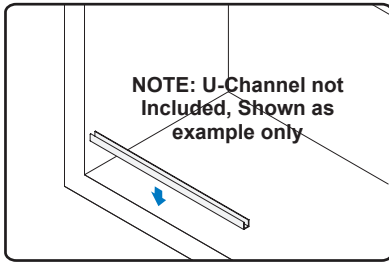
NOTE: Ensure Header is level. If not, loosen screws holding Mounting Blocks to adjust height.



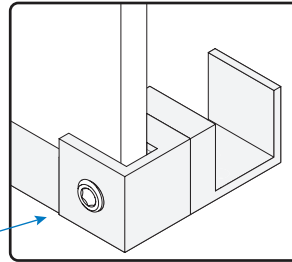
CEL CSER84 SINGLE SLIDING DOOR KIT

⑧ U Channel (Optional)

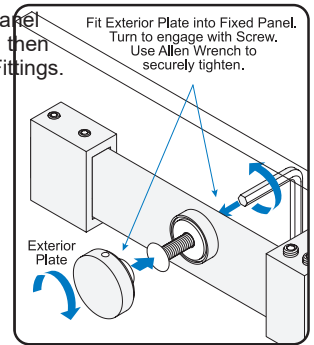
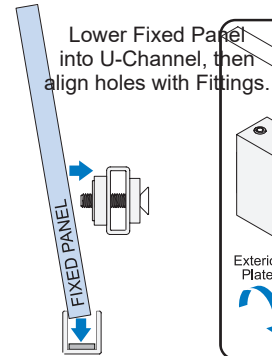
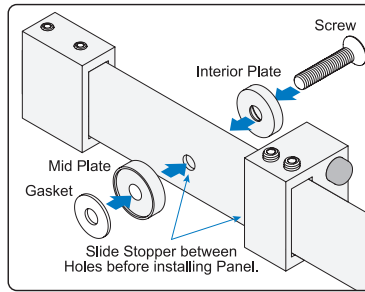
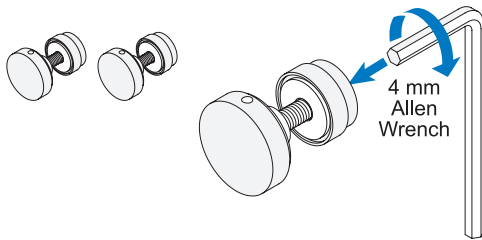
NOTE: Fixed Panel may be fastened to curb with clamps. Use dimensions shown below to calculate length of U-Channel for each mounting option.



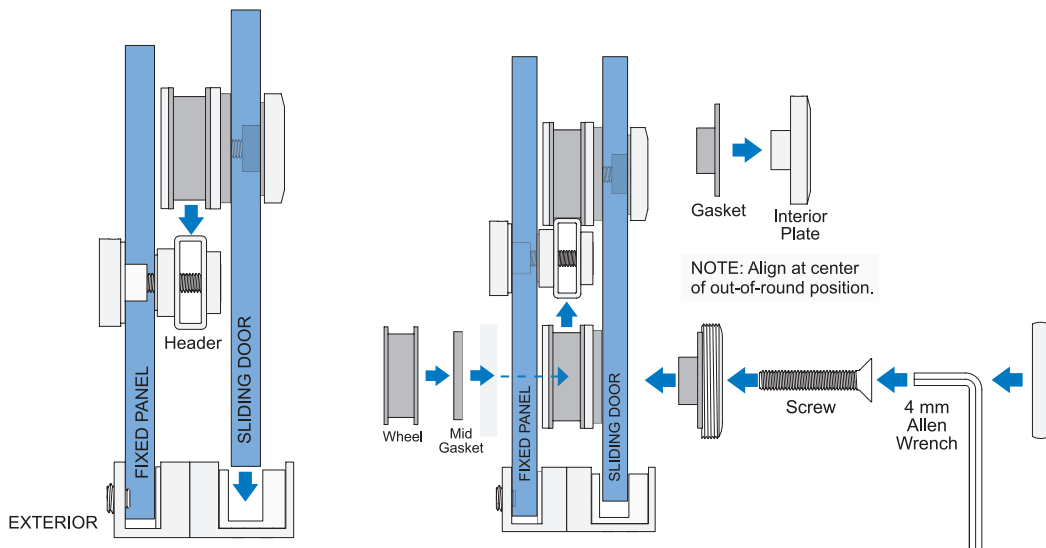
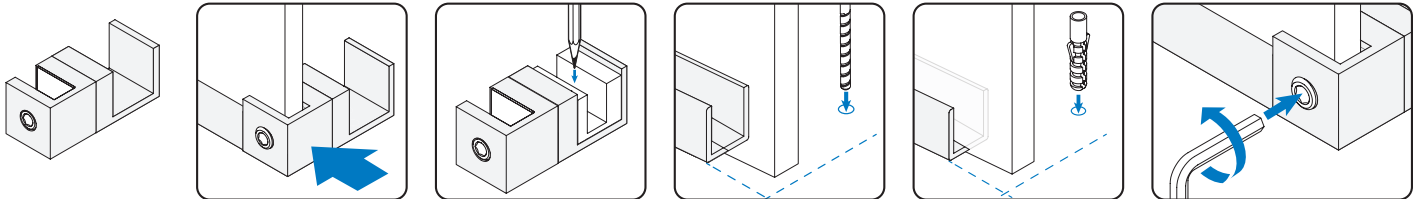
Door Guide caps end of U-Channel.



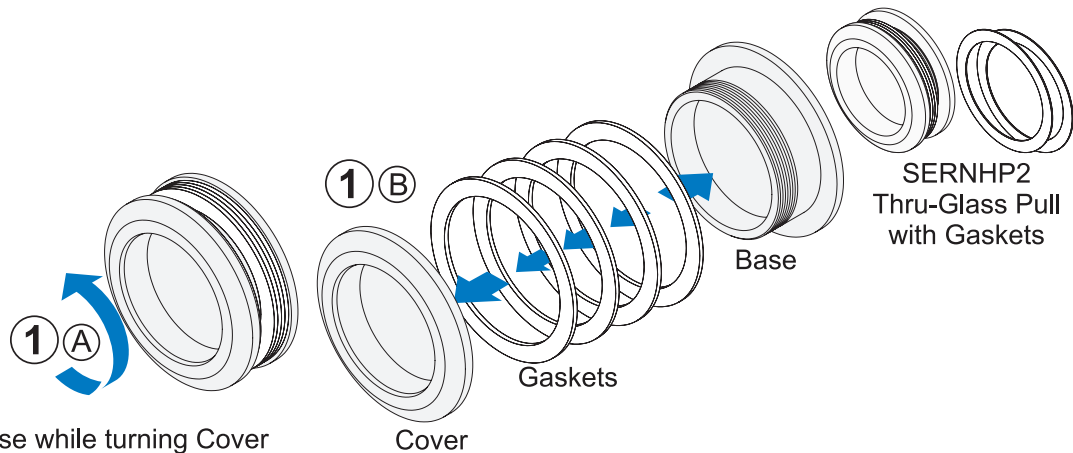
⑨ Fixed Panel Fittings



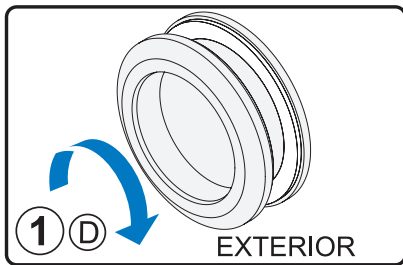
⑩ Bottom Guide



CEL CSER84 SINGLE SLIDING DOOR KIT



Hold Base while turning Cover counter-clockwise to loosen and clockwise to tighten.



Install L-Seal

